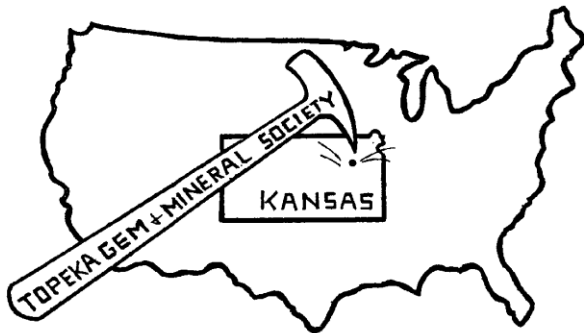


The Topeka Gem and Mineral Society, Inc.  
 1934 SW 30<sup>th</sup> St. Topeka, KS 66611  
 Rock2Plate@aol.com

# THE GLACIAL DRIFTER



www.TopekaGMS or  
 Facebook: Topeka Gem and Mineral Society Field Trips

The Topeka Gem & Mineral Society, Inc.  
 Organized December 3, 1948

Member of Rocky Mountain Federation of  
 Mineralogical Societies American Federation of  
 Mineralogical Societies



The Glacial Drifter, Vol. 60, No. 2, Feb. 2017

The Purpose of the Topeka Gem & Mineral Society shall be exclusively educational and scientific: (1) to promote interest in geology and the lapidary arts; (2) to encourage the collection and display of rocks, gems, and minerals; (3) to encourage field trips and excursions of a geological, or lapidary nature; and (4) to encourage greater public interest and education in gems and minerals, cooperating with the established institutions in such matters.

Meetings: 4<sup>th</sup> Friday of each month, September to May, 7:30 pm, Stoffer Science Hall, Room 138, Washburn University.  
 No meeting in December unless notified of a change. Picnic meetings are held June, July and August.

Dues: Individual, \$15.00; Couple, \$20.00; Junior (under 18 years of age), \$5.00. Dues are collected in December for the following year. Send dues to: **Millie Mowry, Treasurer, 1934 SW 30<sup>th</sup> St, Topeka, KS 66611.**

**www.TopekaGMS.org**

## 2017 OFFICERS AND CHAIRS

President	Mike Cote	220-3272	Cab of the Month	Debra Frantz/Fred Zeferjohn	862-8876
1 <sup>st</sup> Vice Pres.	Dave Dillon	272-7804	Field Trip Coord.	Leslie Hartman	380-6016
2 <sup>nd</sup> Vice Pres.	Carolyn Brady	233-8305	Publicity	TGMS Board	-----
Secretary	Cinda Kunkler	286-1790	Welcome/Registration	Jason Schulz	640-6617
Treasurer	Millie Mowry	267-2849	Property	M. Cote/D. Dillon	220-3272
Directors	Harold Merrifield	633-9745	AFMS Scholarship	Cinda Kunkler	286-1790
	Chuck Curtis	286-1790	Editor/Exchange Editor	Millie Mowry	267-2849
	Brad Davenport	379-8700	Show Chairman	Harold Merrifield	633-9745
Historian	Deborah Scanland	273-3034	Show Dealer Chairman	Dave Dillon	272-7804
Federation Rep	Harold Merrifield	633-9745	Show Secretary	Cinda Kunkler	286-1790
Corporation Agent	Millie Mowry	267-2849	Jr. Rockhound Leader	Jason Schulz	640-6617
Librarian	open	-----	Show Case Coordinator	Francis Stockton	913-645-1131
Web Master	Jason Schulz	640-6617			

Area Code for all numbers is (785).

## EXCHANGE BULLETINS WELCOME

For exchange newsletters contact the club via mailing address listed above or email at [rock2plate@aol.com](mailto:rock2plate@aol.com).  
Permission is granted to reprint articles only if proper credit is given to the author, Glacial Drifter and the date.

### Words from Our President

If you have not paid your dues for 2017 we regret that this will be your last newsletter. We do not want to lose anyone, so check with Millie to see if you are one of the few that has not paid.

The Program this month will be presented by our own Jim Blakely. The program is about the rock hounding, wildlife viewing, camping and car touring I did on a trip to Colorado, plus some photos of Dinosaur National Monument. It will be very interesting so you do not want to miss it.

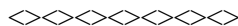
Due to Donna Stockton's health, the TGMS Board has stepped in to fill her position as Publicity Chairman this year. We wish her a speedy recovery from the surgeries she is planning to have. At the last general meeting she name Jo Ussery as the Member of the Year.

The March Board/Show meeting will be held on the 9<sup>th</sup> instead of the 10<sup>th</sup> because of the KC Show.  
Mike and his Rock Stash



### Publicity

The TGMS Board is working hard to get things lined up for the show in October. We are working on the billboards again as well as a garage sale is planned for June 10<sup>th</sup>. We will need lots of help to pull it off so that we can make some money to cover the cost of the billboards. Start cleaning out your unwanted quality items for the sale. We also have several activities planned to help spread the word of our club and show that require extra help. A few can only do so much, so we are asking for volunteers to help us out. Keep an eye out on the Event Calendar for the activities and contact any of the Board members if you can help. The first activity is at the Topeka Discovery Center on February 25<sup>th</sup> from 10 am to 5 pm. We need volunteers to help talk to the visitors about our Club & the Jr Rockhounds, help with rock painting, etc. maybe even just to pick up lunch for the rest of us.



### **RECIPE FOR A GOOD ROCK CLUB**

Assemble a group of Rockhounds in assorted sizes and personalities.

#### **MEASURE ACCURATELY:**

**1 cup friendly words**

**1 cup courtesy**

**1 cup understanding**

**1 cup patience**

❖ **SIFT CAREFULLY** to remove all malice and ego.

❖ **ADD** a dash of wit and humor, a heart full of cooperation and praise, where needed.

❖ **MIX WELL** until blended into a smooth running organization.

❖ **SPRINKLE** with Good Times and Fun. Garnish with New Members. Serve with Warm Greetings. Plenty for all.

(Source: Gems of the Rogue-March 2012; via Deming Gem Sept 2014)

**Visitors are always WELCOME at our meetings!**

*Event Calendar*

# Feb. 2016

# Mar. 2017

1W	
2T	
3F	
4S	
5S	
6M	
7T	
8W	
9T	
10F	<b>Board Meeting- Millie's 7 p. m.</b>
11S	
12S	
13M	
14T	
15W	
16T	Wire Wrap Class @ Millie's 1-3 p.m.
17F	
18S	
19S	
20M	
21T	
22W	
23T	Wire Wrap Class @ Millie's 1-3 p.m.
24F	General Mtg. Stauffer Hall Rm 138 7:30 p.m.
25S	KS Discovery Center 10am -5pm see Jr Rockhounds for info.
26S	
27M	
28T	

1W	Jr Rockhound Mtg Rm 202 Anton
2T	Wire Wrap Class @ Millie's 1-3 p.m.
3F	
4S	
5S	
6M	
7T	
8W	
9T	Wire Wrap Class @ Millie's 1-3 p.m. <b>Board Meeting/Show- Millie's 7 p. m.</b>
10F	KC SHOW
11S	KC SHOW
12S	KC SHOW
13M	
14T	
15W	
16T	Wire Wrap Class @ Millie's 1-3 p.m.
17F	
18S	RMFMS Conference- Albuquerque, NM
19S	RMFMS Conference- Albuquerque, NM
20M	RMFMS Conference- Albuquerque, NM
21T	
22W	
23T	Wire Wrap Class @ Millie's 1-3 p.m.
24F	General Mtg. Stauffer Hall Rm 138 7:30 p.m.
25S	Field Trip-Union Station-Pompeii Exhibit
26S	
27M	
28T	
29W	
30T	Wire Wrap Class @ Millie's 1-3 p.m.
31F	

Any questions ask Millie at rock2plate@aol.com

✓ On the 9<sup>th</sup> we will have the Board/Show Meeting because of the KC Show on the 10<sup>th</sup>.

Volunteering is the heart



beat of YOUR club

## TOPEKA JUNIOR ROCKHOUNDS

<https://www.facebook.com/TopekaGMSJuniorRockhounds>

To register for the Junior Rockhounds or any of the classes, email: Leslie Hartman at: [Hartman.12345@hotmail.com](mailto:Hartman.12345@hotmail.com)



### Junior Rockhound Activity Center

We will have **the Activity Center open for Jr Rockhounds at 7:00.** We will meet at Washburn University 1700 SW College Ave., Topeka, KS in the Stoffer Science Hall Room 138.

February 24- We will be having Rock ID and the silent auction.

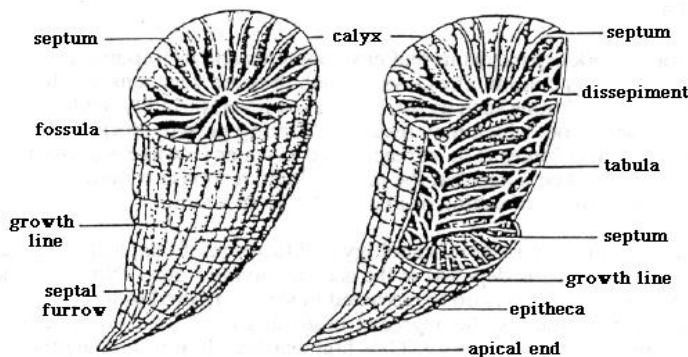
### JR ROCKHOUND CLASSES

**(Some classrooms and dates may have changed so please watch for changes)** \*\*\*\*Here are reminders of the next 2 months of classes: Topeka Shawnee CO Public Library sign in starting at 6:00pm and classes starting at 6:30pm.

1. **1st Wednesday, March 1, 2017, Badge # 1 Minerals**—instructor Brad Davenport, Room #202 Anton. (*For the March General meeting Jr Rockhounds will need to do a presentation DETAILS COMING SOON*)
2. **1<sup>st</sup> Thursday, April 6, 2017, Badge # 1 Rocks**—instructor Brad Davenport, Room #202 Anton.

**Junior Rockhounds you can always bring a new friend to class who are interested in rocks and minerals. You and your friend will get a surprise.**

## FOSSIL OF THE MONTH FOR FEBRUARY:



“**Horn coral**, any coral of the order Rugosa, which first appeared in the geologic record during the **Ordovician Period**, which began 488 million years ago; the Rugosa persisted through the **Permian Period**, which ended 251 million years ago. Horn corals, which are named for the hornlike shape of the individual structures built by the coral animal, were either solitary or colonial forms. Of the many forms known, some are important as index, or guide, fossils for specific spans of geologic time and serve to correlate sometimes widely separated rock units. Because of their mode of growth, some horn corals have been employed as biological clocks to determine the length of the day and year in the distant geologic past. <https://www.britannica.com/animal/horn-coral>.”

“Horn Corals are from the extinct order of corals called Rugosa. Rugose means wrinkled. The outside of these corals have a wrinkled appearance. Horn Coral grows in a long cone shape like a bull’s horn. The fossil is the skeleton of the coral animal or polyp. They built these cone shaped structures from calcium carbonate that came from the ocean water. The animal lived at the top of the cone. As the animal got bigger it added more material to the cone. Each layer was a little bigger than the previous one. All corals belong to the phylum of animals called cnidaria. They are related to jellyfish which are also cnidaria. While modern corals are colonial the now extinct horn corals could be colonial or solitary animals. They had many tentacles sticking out to gather food. The tentacles gave them a flower like appearance. The oldest of the Rugosa corals are found in rocks from the Ordovician Period. Many species evolved during the Paleozoic Era. As a group they flourished until the Permian Period when they became extinct along with most living things during the Great Permian Extinction. [http://www.fossils-facts-and-finds.com/horn\\_corals.html](http://www.fossils-facts-and-finds.com/horn_corals.html)”

### Future Field Trips

#### FEBRUARY

1. Kansas Children’s Discovery Center 4400 SW 10th Ave Topeka, KS. Saturday February 25<sup>th</sup> 10am-5pm. This trip is for everyone so come join the fun, bring friends, and/or volunteer to help. We will have rock painting, pictures for kids to color, and many interesting display pieces for adults and children to see, touch, and take home.

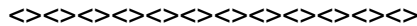
#### MARCH

1. Kansas City Gem & Mineral Show KCI Expo Center 11730 NW Ambassador Dr  
Friday March 10<sup>th</sup> 10am-8pm; Saturday March 11<sup>th</sup> 10am-7pm (Field Trip for TGMS & JR Rockhounds)  
Sunday March 12<sup>th</sup> 10am-5pm

2. Saturday March 25, 2017 we will be going to Union Station MO to see the Pompeii exhibit. “The new traveling show is comprised of nearly 200 artifacts from the Naples National Archaeological Museum. The price is \$12.95 but with over 20 people coming the price will be lower.

#### APRIL

1. Wichita Gem & Mineral Show @ Cessna Activity Center 2744 George Washington Blvd  
Friday April 21<sup>st</sup> 9am-6pm; Saturday April 22<sup>nd</sup> 10am-6pm (Field Trip for TGMS & JR Rockhounds)  
Sunday April 23<sup>rd</sup> 10am-5pm



### Meeting of the Topeka Gem and Mineral Society – 1/27/17

Mike Cote called the meeting to order. Jason Schulz announced 39 present of which 3 are guests for the meeting, door prizes were awarded.

The minutes from the November meeting were printed in The Drifter. Chuck Curtis made a motion and Brad Davenport 2<sup>nd</sup> to accept as printed.

Treasurer’s report was given by Millie Mowry a motion was made by Cinda to accept the report, Chuck 2<sup>nd</sup>, motion carried. No bills were presented. Millie has patches for sale and KC Show discount coupons.

Correspondence: RMFMS Newsletter

Committee reports:

Show – Harold Merrifield did not have anything to report. Dave Dillon has sent out contracts to the vendors.

AFMS – Cinda reported the Scholarship money from our show was sent. We had \$380.45 from the Scholarship table and \$263.00 in Grab Bag sales! Historian – Deborah Scanland has transferred the files from her computer that crashed.

Field Trip – Lesliee plans going to Westlake Ace Hardware tomorrow. Feb 25<sup>th</sup> Children’s Discovery Center in Topeka, March 11, Kansas City Show, March 25<sup>th</sup> possibly to Union Station for the Pompeii exhibit, and in April the Wichita Show.

Junior Rockhounds – Mike presented badges to several of the Juniors. Lesliee announced that Jr Rockhound Member of the Year is Zach, followed by Isaac, Robert & Ian. She also noted that 80 badges were given out in the last year. The next class is February 9, Special Effects.

Jason Schulz demonstrated a ‘new look’ for our website. He also said there are 147 likes on Facebook for both the Jr Rockhounds and TGMS.

New Business: Donna Stockton presented the 2016 Member of the Year award to Jo Ussery. Jo served on the publicity committee bringing in cash and items for gift baskets and made ‘rock bags’ from jeans for all the Junior Rockhounds (and a few lucky others!). Thanks to Jo for all your hard work. Millie presented the 2017 Club Budget with receipts of \$3660 and expenditures of \$3035, Harold Merrifield moved and Brad Davenport 2<sup>nd</sup> to accept, motion carried. The 2017 Show Budget shows receipts at \$9900 and expenditures of \$9281.13, discussion was held on increasing the billboards by \$100 in case of an increase, with that change the total expense is \$9381.13. We are also hoping to have a garage sale and to get donations for publicity, but did not include those in the budget. Jason moved to accept, it was 2<sup>nd</sup> and motion carried. Brad Davenport reported that the ‘bearded bobaloro’s’ (himself, Dave Dillon, Mike Cote’ & Chuck Curtis) performed an audit of the clubs 2016 accounts, which were in excellent order. Good job Millie! Will Gilliland announced he is setting up new exhibits in the WU lab area, so be sure to look them over. Also, that he has officially retired as a professor at Washburn – congratulations Will!

With no further business, we adjourned to our program: Silent Auction!

Fred Zeferjohn announced the Cab of the Month contest winners are: Member Cab Jim Blakely – Needle Obsidian; Member Jewelry Millie Mowry Wire Wrapped Conglomerate.

Respectfully submitted by Cinda Kunkler, Secretary

## MINERAL WITH THE HARDEST TO PRONOUNCE NAME - JEREMEJEVITE

Don Shurtz, Pleasant Oaks Gem and Mineral Club of Dallas  
(From the January – February SCFMS Newsletter, via Stoney Statements Feb 2017)



The best way to describe the mineral Jeremejevite is “rare”. It is also extremely difficult to pronounce its name. Jeremejevite has origins in Germany, and in German the “J” is pronounced more like a “Y” – for instance “ja” (yes) is pronounced “ya”. So Jeremejevite would be “yer-eh-may-yeh-vite” or “yer-eh-may-yehv-ite”

or even “ye-rem-ay-ev-ite” depending on the source you are listening to. If you listen to the pronunciation on some web sites you will also here it pronounced with a “j” or soft “g” sound such as “jer-eh me-jer-vite”, but these do not match the German origin of the name. The bottom line is that is as difficult to pronounce its name as the mineral is rare.

Jeremejevite was originally identified as a unique mineral in 1883. The mineral was initially found in the Adun-Chilon Mountains of Siberia but has since been found in Tajikistan, Namibia, Germany, and most recently in Madagascar. Jeremejevite is named for the Russian Mineralogist Pavel Eremeev; his last name becomes Jeremejev in German, thus the source of the name. It normally shows up in top 10 lists for rare and expensive gems ranging from 9 to 2 in most lists. It is significantly rarer than most diamonds, the exception being red diamonds. Its rarity is on a par with Red Beryl that is found only in Utah and New Mexico.



Jeremejevite’s chemical formula is  $Al_6B_5O_{15}(F,OH)_3$ . The color can be clear, yellow, or blue. Those from Germany are generally of the blue color. It has a Mohs hardness of 6.5 to 7.5 and exhibits a white streak. Although most cut Jeremejevite’s are less than a few carats, the Smithsonian has a 12.78-carat specimen and the Perot Museum has a 43-carat specimen. The

Smithsonian specimen is clear and has numerous hollow tube inclusions stained by iron. The Perot Museum specimen is clear and, if you examine it closely, you can see a red crystal inclusion under the table facets. For many years, the largest cut

Jeremejevite was a 59.68- carat that is pale blue in color. However, recently a faceted 106.5 carat Jeremejevite has been documented by the American Gemological

Laboratories.

Ref:

- \_ Proquest, <http://search.proquest.com/>
- \_ Smithsonian National Museum of Natural History, <http://geogallery.si.edu/>
- \_ Wikipedia, <https://en.wikipedia.org/wiki/>

Pictures:

- \_ Blue Crystals: Rob Lavinsky, iRocks.com – CC-BY-SA-3.0
- \_ Faceted Stone: Don Shurtz, specimen on display at Perot Museum of Nature and Science



## **Kid's Corner- Poem A ROCK PUPPY**

A rock makes an excellent puppy. They're practically almost the same. Except that a puppy's rambunctious; a rock is a little tamer.

It's true that a rock's not as hyper. It may not chase after a ball. And often as not when you call it, it won't even hear you at all.

And maybe it doesn't roll over, and isn't excited to play, rocks always sit when you tell them, and rocks really know how to stay.

It may sleep a little bit longer. It probably eats a bit less. But rocks never pee on the carpet. You won't have to pick up their mess.

So, go ask your folks for a puppy, and possibly that's what you'll get. But, still, if you can't have a puppy, a rock is a pretty good pet. It doesn't annoy you with barking; it quietly sits on a shelf. A rock makes an excellent puppy. That's what I keep telling myself.

(From RMFMS NEWS, Nov.2013 via the book, "The Tightly-Whitey Spider" by Kenn Nesbitt, www.poetry4kids by permission) Via the Ammonite Nov 2013

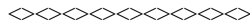
## **How to make a Rock Puppy and Rock Art**

**By Jan Baumeister**

**Pebble Pups:** Get your Mom or dad to help you make a rock puppy: Collect nice smooth surface, roundish rocks with flat bottoms, all sizes/shapes on future field trips to agate beds or along gravel piles on side of creeks or rivers. Wash and dry rocks. Use a nice shaped smooth rock for the body, glue on smaller oval shaped rock for head, small diameter round rock for neck -4 short narrow round rocks for legs - 4 small flat rocks for feet and use some modeling clay to help reinforce the joining of legs/head/neck/feet to the body, smoothing it up and outward. I like using small tube of white (fast-drying) Liquid Nails and hold pieces together until it's firm.

Use acrylic paint to cover the body, then use black color for eyes, nose, mouth, and cut out long felt ears to glue on the head. Little, round rocks can be painted into making ladybugs or flowers to put in your mom's flower bed. I recently got different smooth river rocks in Montana to make a turtle for my flower bed! I'll bring a couple samples of the small painted rocks to the coming meeting. I've seen large smooth rocks painted first with gesso, let dry then paint a baby animal on them. They look very attractive around one's door steps, in flower beds and landscaping. Large smooth slabs of rock make excellent canvas replacements to paint on! Books can be found at hobby shops for how-to-do instructions and designs to paint on rocks. This is an easy rock art project that both junior and adult rock hounds can enjoy!

(Source: The Ammonite Nov 2013)



## **BET YOU DIDN'T KNOW..... BY MARGE LAVIGNE**

...that coral reefs are the largest structures ever built on planet Earth by any animal, including man.

...that a pearl has a life expectancy of only 100 years, or 150 at the most.

...that one ounce of gold can be beaten or flattened into a sheet of 100 square feet, or drawn into a wire almost a mile long, or made into a foil that is less than five millionths of an inch thick and virtually transparent.

..that your turquoise ring could change its color if you wash your hands without removing it and even become smelly if you immerse it in dishwater or oily liquid.

..that two flints or a flint and steel will strike a spark that can be used to start a fire, but also that two quartz stones will serve the same purpose.

...that some gem materials come from strange sources. One is grown on trees (amber -formally tree sap). Some start as an irritant inside the shell of a mollusk (pearls) or grow in the mouths of animals (ivory). One begins as an "apartment complex" for a colony of sea creatures (coral)

.... Obsidian comes from volcanoes and is the product of stone so hot that it melts. One is even thought is it's formed of rock which has melted after being hit by a meteorite falling from outer space.

.. .that what determines the hardness graduation in lead pencils, which, by the way, range from 9H (hard) to 9B (extra soft) is achieved through the addition of varying amounts of clay to the graphite. Graphite is the "lead" in lead pencils.

...that the polishing agent known as "jeweler's rouge" is made of powdered hematite.

(The Rock Rattler, APRIL 2010; Via Rock Cutters News, Sep. 2012, via the Ammonite Nov 2013)

## The Curious Case of the Crying Calcite

By Sara Kurth

Over the holiday season, Museum staff noticed something alarming. The Angel Wing calcite was crying! Well, it wasn't really crying, but it filled the case with water that leaked out behind the wall. There was no water on the outside walls and the water was relegated to just the single case. The mineral specimen was moved so the water could be cleaned and the cause of the water could be investigated. It turns out that there are some very interesting properties associated with the mineral.

Angel Wing calcite is a relatively new name for this variety of calcite. In fact, it is only within the New Age scene that the name is used. Calcite is a calcium carbonate ( $\text{CaCO}_3$ ) mineral found in sedimentary limestone rock. The mineral calcite comes in many colors and crystal structures. Several polymorphs, or minerals with the same chemical composition but different crystal shapes exist, including aragonite and vaterite. Calcite is the most stable form of  $\text{CaCO}_3$  – aragonite will change into calcite under extreme temperatures greater than 380°F.

Among some of the interesting attributes of calcite is its ability to double refract. This property allows objects viewed through the crystal to appear doubled. Using the transparent form of calcite, Iceland spar, the double refraction property has been utilized for optical purposes, including early use by Vikings for navigation purposes. In fact, ancient sea creatures called trilobites had calcite optic lenses, useful for seeing predators in murky waters (Schwab, 2002). Calcite will readily dissolve when exposed to acid. It is this reason that marble, metamorphosed limestone, will break down over time when exposed to the elements.

This does not explain why our Angel Wing calcite was crying. Calcite is hygroscopic, which means that it is able to absorb water from the environment (Rougvie, 2016). Much like salt can become clumpy in humid summer months, calcite can, over time, absorb water, which will eventually destroy the crystal structure.

For unknown reasons, on December 21st, our Angel Wing calcite spontaneously released all the absorbed water on a single day. Perhaps there was a significant change in humidity in the Museum, or the temperature fluctuations in December caused a significant change in the environment. Whatever the reason, it is now clear that humidity control for the specimen is necessary. To alleviate the humidity, a moisture absorbent material has been placed in the case, much like placing rice into your salt container. The Angel Wing calcite was returned to its case on permanent display.

### References

Rougvie, J.R., January 6, 2016, personal communication, Beloit College, Beloit, Wisconsin

Schwab, J.R., 2002, British Journal of Ophthalmology, v. 86(4).

Lizzadro Museum of Lapidary Art, 220 Cottage Hill Ave. Elmhurst, IL 60126

Via Tulip City Conglomerate 4/16, via WGMS Rockhounder Oct 2016

<><><><><><><>

## Henry's Helpful Hints

by Henry Wilson

1. Don't try to cut and polish cabs while watching TV.
2. Always walk uphill while collecting large specimens.
3. Tin oxide will not work as well in your coffee as Cremora.
4. Most worthwhile gemstones can be dug only during a rain or snowstorm.
5. All worthwhile gemstones are a good 500 miles away at the end of a dirt road at about 8,000 feet elevation.
6. If you can't identify a mineral, call it jasper. No one else will know either.
7. Don't spill dop wax on your wife's stove.
8. Don't store tumbled stones in a candy dish.
9. There are approximately 135 ways to polish Jade, most of which don't work.