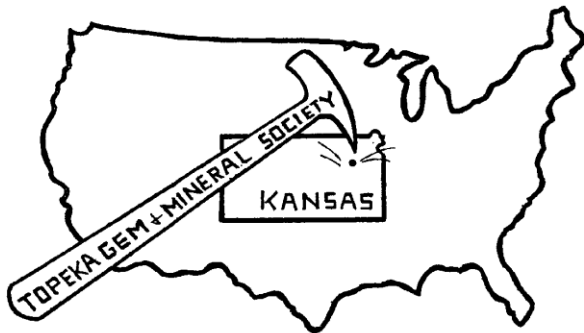


The Topeka Gem and Mineral Society, Inc.
 1934 SW 30th St. Topeka, KS 66611
 Rock2Plate@aol.com

THE GLACIAL DRIFTER



www.TopekaGMS or
 Facebook: Topeka Gem and Mineral Society Field Trip

The Topeka Gem & Mineral Society, Inc.
 Organized December 3, 1948

Member of Rocky Mountain Federation of
 Mineralogical Societies American Federation of
 Mineralogical Societies



The Glacial Drifter, Vol. 59, No. 09, Sept. 2016

The Purpose of the Topeka Gem & Mineral Society shall be exclusively educational and scientific: (1) to promote interest in geology and the lapidary arts; (2) to encourage the collection and display of rocks, gems, and minerals; (3) to encourage field trips and excursions of a geological, or lapidary nature; and (4) to encourage greater public interest and education in gems and minerals, cooperating with the established institutions in such matters.

Meetings: 4th Friday of each month, September to May, 7:30 pm, Stoffer Science Hall, Room 138, Washburn University.
 No meeting in December unless notified of a change. Picnic meetings are held June, July and August.

Dues: Individual, \$15.00; Couple, \$20.00; Junior (under 18 years of age), \$5.00. Dues are collected in December for the following year. Send dues to: **Millie Mowry, Treasurer, 1934 SW 30th St, Topeka, KS 66611.**

2016 OFFICERS AND CHAIRS

President	Mike Cote	220-3272	Cab of the Month	Debra Frantz/Fred Zeferjohn	862-8876
1 st Vice Pres.	Dave Dillon	272-7804	Field Trip Coord.	Leslie Hartman	380-6016
2 nd Vice Pres.	Carolyn Brady	233-8305	Publicity	Donna Stockton	913-645-7677
Secretary	Cinda Kunkler	286-1790	Welcome/Registration	Jason Schulz	379-5538
Treasurer	Millie Mowry	267-2849	Property	M. Cote/D. Dillon	379-5538
Directors	Harold Merrifield	633-9745	AFMS Scholarship	Cinda Kunkler	286-1790
	Chuck Curtis	286-1790	Editor/Exchange Editor	Millie Mowry	267-2849
	May Springer	286-0742	Show Chairman	Harold Merrifield	633-9745
Historian	Deborah Scanland	273-3034	Show Dealer Chairman	Dave Dillon	272-7804
Federation Rep	Harold Merrifield	633-9745	Show Secretary	Cinda Kunkler	286-1790
Corporation Agent	Millie Mowry	267-2849	Jr. Rockhound Leader	Jason Schulz	379-5538
Librarian	open	-----	Show Case Coordinator	Francis Stockton	913-645-1131
Web Master	Jason Schulz	379-5538			

Area Code for all numbers is (785).

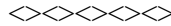
EXCHANGE BULLETINS WELCOME

For exchange newsletters contact the club via mailing address listed above or email at rock2plate@aol.com .
Permission is granted to reprint articles only if proper credit is given to the author, Glacial Drifter and the date.

Topeka Gem and Mineral Society have a new website:
www.TopekaGMS.org Come and check us out!

Minutes of the Topeka Gem and Mineral Society

No meeting in the months of June, July and August



Words from Our President

Now that we have had a break over the summer months it is time to jump in with both feet and get with the agenda for the upcoming events. First off, the annual show is right around the corner and we need a lot of volunteers to help get it set up and to work 2 hour shifts both Saturday and Sunday. We need some strong armed bodies to help load the supplies at the storage unit and be able to help take them back on Sunday. Sign-up sheets will be available at the next meeting or you can call or email Millie. Second on the agenda is the election of Officers for the next year. If you are interested in becoming an officer of our club, let the calling committee know when they call or let one of the officers know. Elections will be held in November, installation in December at the Christmas Dinner, and you take over in January. The program for the month of September will be the Silent Auction. Millie said there are still 32 – 5 gallon buckets of rocks in the storage shed. Hopefully by the time the show is over we can empty all of them.

President Mike and his Rock Stash!

COMMENTS OF The V-P!

I cannot say enough about how well all the students are doing in cutting and polishing stones at the Barn. Even the Jr. Rockhounds are well on their way to completing their projects, so they can earn their Lapidary Patch. More of our members should take advantage of the free lessons. This week rain is forecasted each day so watch your emails for any changes. When it gets to cold the barn will be closed down until spring as the water freezes without heat. Dave---

Visitors are always WELCOME at our meetings!

Lessons At The Barn

Lessons at the Barn will be every Tuesday from 6 – 9 p.m. unless there is bad weather. Watch your email for notice of cancellation if there is storm on the way.

Stone cutting, Polishing, Silversmithing, Casting (weather permitting) & wire wrapping
We have stones you can purchase to cut & polish, supplies for silversmithing, casting and wire wrap you will need to furnish or talk to Dave or Mike.

Again this year there will be a donation jar but the lessons are free to members.

Email for directions: rock2plate@aol.com davidd5124@aol.com mcote35@yahoo.com

If you are interested in putting in a case at our annual show in October,
call
Francis Stockton at 913-645-1131 with your request.

Publicity

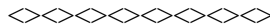
We are on the run from here on out. Out being the day after the show. Then we jump in again and start all over again in order to get in on Sponsors' budgets for the New Year. The billboards and T-Shirts have been ordered. We should see the billboards going up on Sept. 19 and the shirts should be in by the end of next week.

The Publicity Committee met on Sept. 8 and filled baskets with product collected from our donors. We still have to wrap the baskets. We discussed using some of the product to give away as prizes for several children's games that Lesilee has planned for the children and youth coming through at the show.

There are still plenty of loose ends to tighten up before the show but the Big thing is that the Cardwells ARE coming from Prospectors. Still in discussion is if we can afford to have a coffee and doughnut or cookie and cupcake gathering as a Thank You to our donors and sponsors. It is a great time to schmooze and for our sponsors to put names and faces together. I ask, "Can we afford not to do this?" We need to get some of them through the door so that they know we are for real and a good opportunity to show off our guests, The Cardwells.

Thank you all for your great show of support. This has been a strange year for TGMS but I feel we all have stood up to the task very well. May, Cinda, Jo, Millie, Lesilee, Deborah, Janet, Chuck, Dave, Mike, The Millers, Francis, Harold, Carolyn and those of you who baked, toled, hauled and gave toward making my budgeting work, THANK YOU, THANK YOU, THANK YOU.

NOW LET THE GAMES BEGIN AND ENJOY, **DIAMOND JUBILEE HAS MANY FACETS, OUR 60th**.
Donna Stockton, your still smiling publicist



Meet the Cardwell's - Craig & Tracie



The Cardwell Family- Craig and Tracy Cardwell mine on Mount Antero. They have 16 claims from the South Knob to the Mount White Basin. Craig is the fourth generation in his family to mine on Mount Antero. Craig's grandfather, Grady, used a Caterpillar D9 to make a road to the top of Mount Antero. (Source: Wikipedia, the free encyclopedia)

Pictures from Tracie's Facebook page.

Event Calendar

Sept. 2016

OCT. 2016

1T	
2F	
3S	
4S	
5M	
6T	
7W	
8T	
9F	
10S	
11S	
12M	
13T	Lessons at the Barn- 6-9 p.m.
14W	
15T	Wire Wrap Class at Millie's 1-3 p.m.
16F	
17S	
18S	
19M	
20T	Lessons at the Barn- 6-9 p.m.
21W	
22T	Wire Wrap Class at Millie's 1-3 p.m.
23F	TGMS Regular Meeting 7:30 p.m. Program: Silent Auction
24S	
25S	
26M	
27T	NO LESSONS AT THE BARN –Mike's gone on vacation!
28W	
29T	Wire Wrap Class at Millie's 1-3 p.m. Publicity/Show Mtg @ St Peter Church 7 p.m.
30F	

1S	
2S	
3M	
4T	
5W	
6T	Wire Wrap Class at Millie's 1-3 p.m. Jr Rockhound meeting 6 p.m. TSCPL room 202 Anton
7F	Board Meeting @ Millie's 7 p.m.
8S	
9S	
10M	
11T	
12W	
13T	NO Wire Wrap Class at Millie's
14F	Show set-up day 8 a.m. – 9 p.m. AG HALL
15S	TGMS Annual Show 10-6
16S	TGMS Annual Show 10-5
17M	
18T	
19W	
20T	Wire Wrap Class at Millie's 1-3 p.m.
21F	
22S	
23S	
24M	
25T	
26W	
27T	Wire Wrap Class at Millie's 1-3 p.m.
28F	TGMS Regular Meeting 7:30 p.m. Program: TBD
29S	
30S	
31M	HALOWEEN

Any questions, contact Millie at rock2plate@aol.com or 785-267-2849

Volunteering is the heart



beat of YOUR club

TOPEKA JUNIOR ROCKHOUNDS

The Facebook page for the Topeka Junior Rockhounds also has a new website page.

Take a look and place a 'LIKE' on it.

<https://www.facebook.com/TopekaGMSJuniorRockhounds>

To register for the Junior Rockhounds or any of the classes, email: Leslie Hartman at: Hartman.12345@hotmail.com



Junior Rockhound Activity Center

We will have **the Center** open at the general meeting for Jr Rockhounds at 7:00. We will meet at Washburn University 1700 SW College Ave., Topeka, KS in the Stoffer Science Hall Room 138. **All Jr Rockhounds** to show up because each of you have one or more badges coming to you.

NOTE to all: **The Barn will close when the weather turns cold (Mike will determine this as there is no heat in the barn) and reopen when the weather remains warm, around May 4, 2017.**

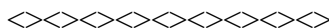
Side note for the Junior Rockhounds: We will be taking field trips to the barn for the Lapidary Arts #4 badge after May 4, 2017 class to finish your lapidary project. You will need to present your project at one of the general meetings to get your badge and you can display your project at the next show in October 2017.

Here is an update for the next 3 months of classes: Topeka Shawnee CO. Public Library sign in starting at 6:00 pm and classes starting at 6:30 pm.

- ✓ October 6th, Badge # 5 Collecting - instructor Barbara Smith, Room # 202 Anton.
- ✓ November 3rd, Badge #13 Gemstone Lore and Legend – instructor Barbara Smith, Room # 206 Menninger.
- ✓ December 1st, Badge # 20 Maps – instructor Pat Gilliland, Room # 101A Marvin Auditorium.

Junior Rockhounds you can always bring a new friend to class who are interested in rocks and minerals. You and your friend will get a surprise.

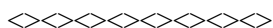
Oct. 15-16—TOPEKA, KANSAS: Annual show; Agricultural Hall @ Kansas Expocentre; 17th & Topeka Boulevard; Sat. 10-6 and Sun. 10-5. **Jr Rockhounds** will need to show up both days to help with the show. At the field trip and the general meeting there will be a sign-up sheet for the day(s) and time you can help at the show. Also, you can email me at hartman.12345@hotmail.com to let me know.



Field Trip –Leslie Hartman

Due to the FAMOUS Kansas unpredictable weather we are staying inside. For our next field trip on September 24, 2016, we will be heading to **Science City at Union Station** at 30 West Pershing Road, Kansas, MO 64108 at 10AM. We will meet outside before going in because we will need a group of 15+ for the entire group to get the discount rate from \$13.50 to \$7.00 each. At the Science City we will see **Dinolab and Digsite**: Unearth the fossil remains of dinosaurs, and learn about paleontology and **Science on a Sphere**: A stunning and powerful visual perspective of Earth and other objects in our solar system. Just to name a couple but there is so much more to see of how rocks and minerals have a role in science and life each day.

All field trips are for everyone. Any Jr. Rockhound can bring a friend. I will need everyone who wants to come to email me to make sure we have 15+ people to get the discount. Email me at hartman.12345@hotmail.com by September 20, 2016. Please bring cash for the discount ticket of \$7.00 each person and child.

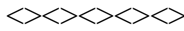


We need lots of volunteers for the annual show in October.....sign up now and get your choice of when you want to work the two hour shift.
Contact Millie to sign up.

Show Dates:

- Sep 23-25 Tri-State Gem & Mineral, Free Admission, joplinmuseum.org@sbcglobal.net or 417-623-1180
- Oct 1-2 Omaha, NE Westside Middle School, 8601 Arbor St., Sat 9-6 Sun., 10-5 Nerockgem.org
- Oct 15-16 Topeka, KS TGMS KS Expocentre AG Hall 17th & Topeka Blvd Sat 10-6, Sun 10 – 5 Featuring the TV personalities, The Prospectors. They will be giving lectures each day.

For additional listings of gem shows see: www.rockngem.com



Unique Crystals: Newfound Purple-Pink Mineral Is Like No Other

By Jeanna Bryner, Managing Editor, Live Science.com | April 28, 2014



This specimen is 0.4 mm across, found at the Armstrong mine in Widgiemoorltha, Western Australia. Credit: Peter Elliott

A new purple-pink mineral that has a chemical composition and crystalline structure unlike any of the known 4,000 minerals has been discovered at a mining site in Western Australia, researchers report. Now called putnisite, the mineral was discovered in a surface outcrop of Polar Bear Peninsula, Southern Lake Cowan, north of Norseman. While workers with a mining company were prospecting for nickel and gold, one of them noticed the bright-pink grains and sent the mineral to the Commonwealth Scientific and Industrial Research Organization (CSIRO), and then it was sent to Peter Elliott, a research associate with the South Australian Museum, for examination.

And, sure enough, the crystal was novel.

"A mineral is different from currently known minerals if it has either a different chemical composition or it has a different crystal structure, or sometimes both," Elliott told Live Science in an email. "Occasionally, a new mineral will have a chemistry that is very different to other minerals, or it will have a crystal structure that is very different to other minerals." [See Stunning Photos of 'Godzilla' & Other Minerals]

Elliott added, "Putnisite, a strontium calcium chromium sulfate carbonate, has both a unique chemical composition and a unique crystal structure." (The color of putnisite crystals ranges from pale to dark purple, with a pink streak, according to the researchers.)

Found on volcanic rock, the new mineral occurs as tiny crystals just 0.02 inches (0.5 millimeters) in diameter, and looks like spots of dark pink on dark-green-and-white rock; under a microscope, the mineral appears as cubelike crystals.

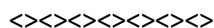
"When the rocks in the Lake Cowan area were deposited millions of years ago, they contained small concentrations of strontium calcium chromium and sulfur," Elliott said. "Over time, weathering released these elements and concentrated them, allowing putnisite to crystallize."

Though it is not uncommon to find a new mineral — 50 to 100 such specimens have been discovered in each of the past several years — they aren't usually discovered by miners, Elliott said.

"Often, they are found in museum mineral collections," he said. "Many new minerals are found by mineral collectors who will forward a specimen they have found to a mineralogist at a museum of [a] university for identification."

The researchers are not sure if the mineral, described in *Mineralogy Magazine*, has any practical uses. Putnisite gets its name from Australian mineralogists Andrew and Christine Putnis.

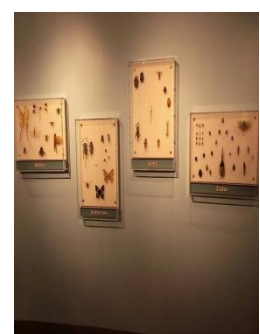
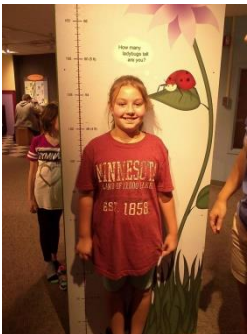
(Source: <http://www.livescience.com/45175-unique-putnisite-mineral-discovered.html> & CIMS Nuggets 9/2016)



We would like to know what you the members would like to have as a program at our meetings. Email your ideas to either, Dave at davidd5124@aol.com, Millie at rock2plate@aol.com, Cinda at cindakunkler@att.net or ckunkler@mizehouser.com, or call either of us with your ideas. Thank you.



Junior Rockhounds learning how to pan for gold



TGMS Jr Rockhounds field trip to KU Museum

Four Gems- Four Countries

Mini Miner Monthly Volume 8, Number 2 (Feb. 2014)

Benitoite

Benitoite (*Barium titanium silicate*) is yet another new gemstone. It was first discovered in 1906 in San Beni-to County, California (can you see how it got its name?!) by James M. Couch who was camping in the hills. The story goes that he woke up to find the sunshine bouncing off of the faces of benitoite crystals that were on the ground around his campsite. Not only is benitoite a rare mineral but gem-quality crystals are even rarer. It is only found at this locality in California - it has never been found anywhere else in the world. Because of this fact, California adopted **benitoite** as its official state gem on October 1, 1985.

Via Ore-Cutts, 7/16; via WGMS Rockhounder 9/2016



A single benitoite crystal from **San Benito County, California.**

Tanzanite / Zoisite

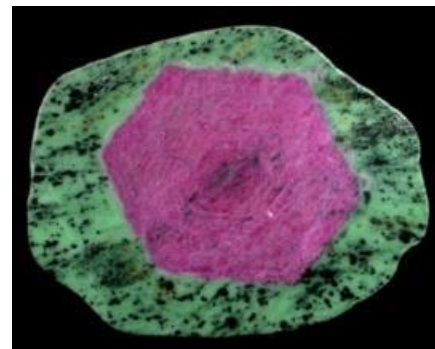
Pictures: (blue) *Picture Farlang.com* Zoisite Green (with ruby) *johnbettsfineminerals.com*

Tanzanite (*Calcium aluminum silicate*) is a deep blue to purple variety of the mineral **zoisite**. This gemstone is one of the most recent gemstone discoveries. It was first discovered in 1967 in the country of Tanzania, from which it gets its name. Tanzanite has quickly become a very popular gemstone.

Some gems change color depending on how they are held in the light. This is a property called **pleochroism**. Most pleochroic gems display two colors.

Zoisite, however, displays three different colors depending on how it is held in the light. The color changes from blue, light purple and deep red.

Because it shows three colors, it is described as being **trichroic**. Both specimens shown are from **Tanzania**. Many collectors are familiar with the ruby in zoisite (red in green), Fewer have seen the blue-purple gem variety.



Peridot (Olivine)

Picture: *Johnbettsfineminerals.com*

Olivine (*Iron magnesium silicate*) is one of the most common minerals on Earth and is even found on the moon and in meteorites. It forms in dark igneous rock like basalt.

Gem quality olivine is called **peridot**. Even though olivine is very common, gem quality olivine is rarer. It is grass green. The more desired peridot gems are darker green.

Peridot is the birthstone for the month of August. Peridot is found in a type of meteorite known as Pallasite meteorites. It is, in fact, the only gemstone found in meteorites!

There are different legends about peridot. People in the Middle Ages believed wearing peridot would protect a person from evil spirits.

Others thought it could make a person wealthy. **The peridot pictured at right is from St. John's Island, Red Sea, Egypt.**



Via: Ora-Cutts July 2016

BIG DIAMOND!!

<http://www.msn.com/en-us/news/world/diamond-the-size-of-a-tennis-ball-could-fetch-dollar70-million>. **Picture by the Associated Press**

The largest diamond found in over a century will be auctioned by Sotheby's on June 29, 2016. The selling price is expected to be in the neighborhood of \$70 million. That is one expensive neighborhood! The diamond was found in a Canadian-owned mine in Botswana in November, 2015. Named La Rona The Light, it measures 1,109 carats, making it the second-largest gem-quality rough diamond ever discovered.

Via: Ora-Cutts July 2016

