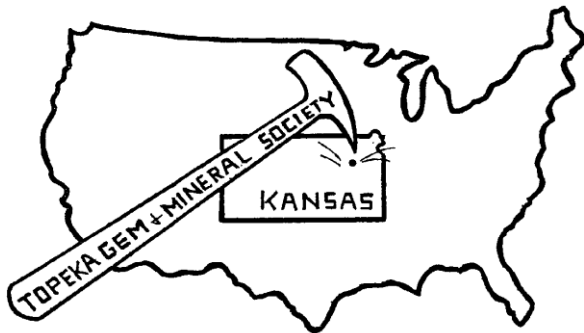


The Topeka Gem and Mineral Society, Inc.  
 1934 SW 30<sup>th</sup> St. Topeka, KS 66611  
 Rock2Plate@aol.com

# THE GLACIAL DRIFTER



[www.topekagemandmineral.org](http://www.topekagemandmineral.org)  
 Facebook: Topeka Gem and Mineral Society Field Trip

The Topeka Gem & Mineral Society, Inc.  
 Organized December 3, 1948

Member of Rocky Mountain Federation of  
 Mineralogical Societies American Federation of  
 Mineralogical Societies



The Glacial Drifter, Vol. 58, No. 06, June. 2015

The Purpose of the Topeka Gem & Mineral Society shall be exclusively educational and scientific: (1) to promote interest in geology and the lapidary arts; (2) to encourage the collection and display of rocks, gems, and minerals; (3) to encourage field trips and excursions of a geological, or lapidary nature; and (4) to encourage greater public interest and education in gems and minerals, cooperating with the established institutions in such matters.

Meetings: 4<sup>th</sup> Friday of each month, September to May, 7:30 pm, Stoffer Science Hall, Room 138, Washburn University.  
 No meeting in December unless notified of a change. Picnic meetings are held June, July and August.

Dues: Individual, \$15.00; Couple, \$20.00; Junior (under 18 years of age), \$5.00. Dues are collected in December for the following year. Send dues to: **Millie Mowry, Treasurer, 1934 SW 30<sup>th</sup> St, Topeka, KS 66611.**

## 2015 OFFICERS AND CHAIRS

President	Mike Cote	220-3272	Cab of the Month	Debra Frantz/Fred Zeferjohn	862-8876
1 <sup>st</sup> Vice Pres.	Dave Dillon	272-7804	Field Trip Coord.	Larry Henderson	-----
2 <sup>nd</sup> Vice Pres.	Carolyn Brady	233-8305	Publicity	Donna Stockton	913-645-7677
Secretary	Cinda Kunkler	286-1790	Welcome/Registration	Jason Schulz	379-5538
Treasurer	Millie Mowry	267-2849	Property	M. Cote/D. Dillon	379-5538
Directors	Harold Merrifield	286-3548	AFMS Scholarship	Cinda Kunkler	286-1790
	Chuck Curtis	286-1790	Editor/Exchange Editor	Millie Mowry	267-2849
	George Reed	836-9277	Show Chairman	Harold Merrifield	286-3548
Historian	Deborah Scanland	273-3034	Show Dealer Chairman	Dave Dillon	272-7804
Federation Rep	Harold Merrifield	286-3548	Show Secretary	Cinda Kunkler	286-1790
Corporation Agent	Millie Mowry	267-2849	Jr. Rockhound Leader	Larry Henderson	-----
Librarian	open	-----	Show Case Coordinator	Francis Stockton	913-645-7677
Web Master	Jason Schulz	379-5538			

Area Code for all numbers is (785).

## EXCHANGE BULLETINS WELCOME

For exchange newsletters contact the club via mailing address listed above or email at [rock2plate@aol.com](mailto:rock2plate@aol.com) .  
Permission is granted to reprint articles only if proper credit is given to the author, Glacial Drifter and the date.



### Meeting of the Topeka Gem and Mineral Society – May 22, 2015

Mike Cote' called the meeting to order. After we got set up in room 118!

Jason Schulz announced 25 members and 1 guest are present for the meeting, door prizes were awarded. (Still can use more door prizes – bring them to the next meeting!)

The minutes from the April meeting were printed in The Drifter. Will Gilliland made a motion and Carolyn Brady 2<sup>nd</sup> to accept as printed.

Treasurers report was given by Millie Mowry, no bills were presented. Motion was made to accept the report, by Dave Dillon and Chuck Curtis 2<sup>nd</sup>, motion carried.

Correspondence: Millie has some flyers for various shows.

Committee reports: Publicity – Donna has been checking on getting T-shirts ordered, with our logo on the front left side and the back will be similar to our show flyer with a fluorescent specimen. We will be selling them to members for approximately \$10.00. She hasn't decided which company to go with yet. They will be a fluorescent yellow or green. She went to Haskell University and talked with someone at the museum to see if they would be interested in having a special exhibit at the show of Jewelry or Science. Show Chairman: Harold – the show committee had a meeting last week and will be working on the cases. Dave – we are thinking about radio advertising, Donna has not had time to contact them. The show cases will be repaired, painted and new hardware on the small Wichita cases. The big cases, we will be replacing the wood, changing out to a better grade than they currently are made from. We will be working on grab bags at Millie's over the summer. He has acquired 2 more new dealers K.C. Gem – custom faceting, he does some things for The Prospector Phil Napier and KC Gem Dude from Blue Springs Mo. He still wants 3 more dealers. We need more rock for the Pebble Pile. May has volunteered to help Carolyn with the Scholarship Tables. Harold added – if you have any 'fist size' or larger of fluorescent specimens we can use in our display, please bring them to one of the meetings. Will gave us some lights that the club had donated in prior years to Washburn to use in the fluorescent exhibit.

Historian-Deborah; nothing to report.

Field Trip-Larry Henderson, he is in a 'boot', so no more field trips until he is able. Let Larry know of any suggestions you might have for field trips. There are pictures on Facebook of the last field trip.

Jr Rockhounds; Pat Gilliland had a good class on collections, they need further work to get them ready for their badge. Pat has a lesson on Showmanship for June and Jason will have Earth & Space in August. Barbara is out of town now, she has the activity for September. Andrew is the first Junior to have a club vest! September 19<sup>th</sup> will be the Jr Rockhound Round Up from 9-2 at the library.

Webmaster – Jason, nothing new, but Shirley Shulz was chosen for 4-H Volunteer of the Year! We have 99 likes on the Facebook Field Trip page!

With no further business, Chuck moved and Jason 2<sup>nd</sup> to adjourn to our program – Dave & Mike on Slabs to Cabs: How to Make Lapidary Cabochons.

Fred announced the Cab of the Month Winners are:

Member Cab: Mike Cote' – Brazilian Agate, Member Jewelry: May Springer - Fire Agate wrapped pendant; Class Jewelry: Donna Stockton – Mookaite Belt Buckle; Class Cab: Cinda Kunkler – Kansas Moss Agate.

Respectfully submitted by Cinda Kunkler, Secretary

I hope you all are keeping cool and ready for the summer picnic dinners. They are at Millie home and she will give directions. Hope to see everyone there and bring your favorite picnic dish to share. For all those who was wanting silversmith classes, we have been holding them on Tuesday nights. If you don't come---you are missing out on learning how to cut and polish and do silversmithing. I hope more will attend this great opportunity that most clubs charge for.

Mike and his Rock Stash!



## Words from our V. P.

Classes are starting to show some great projects!!! Everyone is turning out some great stones and jewelry pieces. Remember that class is every Tuesday night from 6-9 unless class is called due to weather. Picnics start up this summer starting June 26 at Millie's. She will put the time to show up and what to bring. Hope everyone is doing well and look forward to seeing all at our events!

Dave!



## Field Trip Calendar

**An up-to-date Calendar can be found on the Topeka Gem and Mineral Society Website:**

<http://topekagemandmineral.org/calendar.html>

Public Facebook Page:

<http://www.facebook.com/pages/Topeka-Gem-and-Mineral-Society-Field-Trips/92795058262>

Trips dates are tentative and subject to additions and change. E-mail Larry if you have an interest in any of these trips LHenderson85@gmail.com Larry Henderson, Field Trip Chairman

- June 27, Field Trip TBA

- Additional Show Dates:

For additional listings of gem shows see [www.rockngem.com](http://www.rockngem.com)

---

**July 11-12—TULSA, OKLAHOMA:** Annual show; Tulsa Rock and Mineral Society, Central Park Hall-Tulsa County Fairgrounds; 4145 E. 21st St.; 21st Street between Harvard and Yale. Sat. 9:00 am-6:00 pm, Sun. 10:00 am-5:00 pm; Web site: [www.townrockhound.org](http://www.townrockhound.org)

---

**July 16-18—CODY, WY: RMFMS** Mineral & Gem Show; WY State Mineral and Gem Society, Cody H.S. Sweitzer Gymnasium; 920 Beck Avenue, Cody, WY 82414; Thu. 4:00 p.m-8:00 p.m, Fri. 10:00 am-8:00 pm, Sat. 10:00 am-4:00 pm; [wsmgpsres@wymaterialandgemsociety.org](mailto:wsmgpsres@wymaterialandgemsociety.org); Web site: [www.wymaterialandgemsociety.org](http://www.wymaterialandgemsociety.org)

---

The first and third Tuesday night the Fossil Special Interest Group will meet at 7:00 p.m. at Baker's Dozen, 4310 SW 21st St, Topeka, KS. We will discuss fossils and other collections. Come join us with show and tell.

June 16, 7:00 p.m.

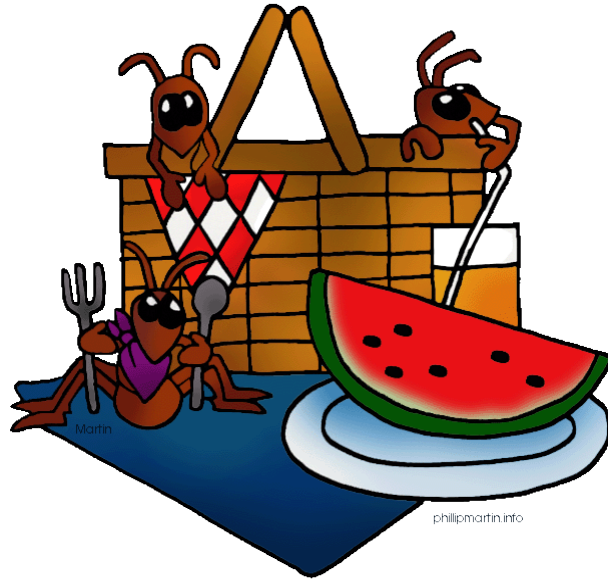
July 7, 7:00 p.m.

July 21, 7:00 p.m.

---

**We still need Best Choice UPS Labels!**

## Picnic Time is Here Again!



Bring your favorite picnic food to share, along with your own table service (plate, silverware, cups). Tea & coffee will be furnished. Time & Date: June 26, 2015 at 6:30 p.m. at my house—1934 SW 30<sup>th</sup> Street, Topkea, KS. (Between MacVicar and Burlingame Rd.) Your spouse is welcome to come even though they might not be a member and also your children. We eat inside where it is cool unless you want to eat on the patio. Hope to see you all on the 26<sup>th</sup>.

Millie Mowry

---



### Grab Bag Sewing Day

July 11<sup>th</sup>. 1 p.m. to 3 p.m.

1934 SW 30<sup>th</sup> St ----Millie's House

Bring your sewing machine so we can make the grab bags for the show. If you cannot sew we still need someone or two to press the bags, and to cut string.

Thanks to May Springer, she has already sewed 204 bags for us. Thank you May!

Let me know 267-2849 or rock2plate@aol.com, if you can attend.

## Publicity

Publicity sees some plans coming to fruition. With everyone's help, we are on track. I visited with Haskill on two occasions and they want to be penciled in to bring demonstrations or display of one sort or another. The president is out of town until the end of June. Will reconnect then.

Our show will be listed in **Craftmaster News** and **RMFMS 'Events and Club Shows'** 2015 calendar.

The T-shirts are going to be nice, I think. Safety Green on a 50/50 Dry Blend material. We have already sold 50 shirts. Thank you so much for the support.

I do want to meet with those who would consider taking a more active role with publicity. Please e-mail me at francisstockton@Hotmail.com or call 913-645-7677. I think I'd like to meet before the 26th of June or by July 15.

My to-do list still includes checking into radio stations that might broadcast outside our venue, cost of billboards, and bank signs. it is not too early to make up news releases for the Sept. Jr. Rockhound Roundup. We might come up with a more catchy theme for this year. We need to come up with packets for the schools, 4-H groups, Scouts, etc. to be distributed a week or two before the event.

Have a wonderfully safe and productive summer. Don't forget to bring home rocks from your vacation.

Respectfully, Donna Stockton, TGMS Publicist

### T-SHIRTS for the SHOW



This is what the T-shirt will look like for advertising the show this year. We have ordered 50 of them for the first go-around. If you have changed your mind and want one, we will put you on the list for the next order to be placed. We tried to keep the cost as close to \$10 as we could, but with the different color changes it may run a little over. Good news is that we may have them back in time for the picnic..... I will let everyone that ordered them know how much they owe and when they can pick them up. Millie

## TOPEKA JUNIOR ROCKHOUNDS



Facebook: <http://www.facebook.com/TopekaJuniorRockhounds>  
To register for the Junior Rockhounds or any of the classes, email  
Shirley Schulz, Program Secretary [sschulz@kdheks.gov](mailto:sschulz@kdheks.gov).

Classes start at 6:30pm at the Town & Country Christian Church, 4925 SW 29th Street. The Topeka Junior Rockhound Advisors will meet at 6:30 pm. Junior Rockhounds are encouraged to attend the club meetings to receive Patches and Badges.

The July 2 class will be "Earth in Space" by Jason Schulz

The August 6<sup>th</sup> class will be "Communication" by Jason Schulz



---

### Childbirth at age 65

With all the new technology regarding fertility recently, a 65-year-old friend of mine was able to give birth.. When she was discharged from the hospital and went home, I went to visit. 'May I see the new baby?' I asked 'Not yet,' She said 'I'll make coffee and we can chat for a while first.' Thirty minutes had passed, and I asked, 'May I see the new baby now?'

'No, not yet,' She said. After another few minutes had elapsed, I asked again, 'May I see the baby now?' 'No, not yet,' replied my friend. Growing very impatient, I asked, 'Well, when can I see the baby?' 'WHEN HE CRIES!' she told me. 'WHEN HE CRIES?' I demanded. 'Why do I have to wait until he CRIES?' 'BECAUSE I FORGOT WHERE I PUT HIM, O.K.?!'

Internet Humor!



## AZURITE AND MALACHITE – FRATERNAL TWINS

- Susan Fisher

.

### Azurite:

Formula:  $\text{Cu}_3(\text{CO}_3)_2(\text{OH})_2$

System: Monoclinic

Color: Azure blue, light blue...

Luster: Vitreous

Hardness:  $3\frac{1}{2}$  - 4

Name: From the ancient Persian lazward, meaning "blue".. The name was changed to azurite in 1824 by Francois Sulpice Beudant.

.

### Azurite

Ibiajara, Bahia, Brazil

(3.5x2.5x4 cm)

### Malachite:

Formula:  $\text{Cu}_2(\text{CO}_3)(\text{OH})_2$

System: Monoclinic

Color: Bright green,

Hardness:  $3\frac{1}{2}$  - 4

Name: Named in antiquity molochitus because it resembled the green color of the leaves. The spelling was changed to malachite sometime before 1661.

### Malachite

Milpillas Mine,

Cuitaca, Mun. de Santa Cruz,

Sonora, Mexico

(12.5x9.x7.3 cm)

Malachite and azurite are closely related minerals. Both are secondary copper minerals frequently found in the oxidized zones of copper bearing ore deposits. Both are copper hydroxyl carbonate with just minor differences in the amounts of copper and the carbonate radical. Both are widely distributed and often occur together in numerous locations. Both have been known from antiquity and have been used for ores of copper, paint pigments and decorative stones. There are numerous striking mineral specimens containing vivid blue azurite and bright green malachite. Azurite is often pseudomorphed to malachite with much sought after specimens showing large azurite crystals partially modified to malachite.

Azurite is typically found as tabular to prismatic crystals of a deep "azure blue" color with lustrous faces. Many of these crystals are very complex so that it is difficult to identify and decipher the Miller indices of the faces. Beautiful specimens are found in many locations, but those from Bisbee, Arizona; Tsumeb, Namibia; and Chessy, France are famous.

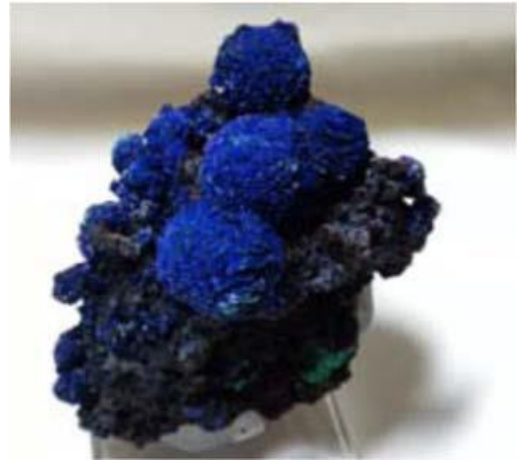
Malachite has widely variable habits. Typically it is found as crystalline aggregates or crusts, often banded in appearance. It is also often found as botryoidal clusters of radiating crystals. Single crystals and clusters of distinguishable crystals are uncommon.

Many of the thick crusts are so compact that they can be cut and polished into ornamental stones or jewelry.

Like azurite, there are numerous locations that provide lovely pieces, but classic pieces have come from the Russian Urals; Bisbee, Arizona; and the Katanga province in the Democratic Republic of the Congo.

(Photos and minerals - Susan Fisher)

(Reprinted from Mineral Minutes, June 2015, Mineralogical Society of DC, via Stoney Statements June 2015)



## MAKE A GEODE AT HOME

Geodes are geologic formations which are created when crystals form inside a vug or hole in an igneous rock. Usually quartz- (and some-times, calcite)-rich waters enter the hole and the quartz crystallizes. A geode looks like an ugly round rock on the outside. But crack it open, and you will discover beautiful crystals that sparkle and shine. Here's a recipe for making a geode at home. You will need the following materials: 1. 3/4 cup of alum powder 2. White glue 3. Paintbrush (small) 4. Container (a large, clean mayonnaise jar or a kitchen bowl will work well) 5. Food coloring 6. Hot water 7. Serving Spoon 8. Plastic Easter eggs Here we go . . . Day 1 1. Paint the inside of 1/2 of a plastic Easter egg with a thin coating of white glue. 2. Sprinkle alum powder on the glue. Be generous - you want to cover as much of the inside of the egg with alum powder as possible. Turn the egg over and shake out the excess alum powder. Set this aside and let it dry for one day so that the glue is completely dry and hard. Reprinted courtesy of "Diablo Diggings", newsletter of the Contra Costa Mineral & Gem Society Page 5 of 10 Day 2 1. Pour 2 cups of very hot water into your container. Caution: Have an adult help you so that you do not get burned by the hot water! 2. Put 50 drops of food coloring into the hot water and stir it with a spoon. 3. Stir in 3/4 of a cup of alum powder into the hot water. You will see that not all of the alum dissolves in the water: you will have some alum powder on the bottom of the container. You can then put the container with the alum water in your microwave and heat it for 1 to 2 minutes. Remove the container very carefully (again, have an adult help you with this step) from the microwave and stir the mixture again with the spoon. 4. Let the water cool for 20 to 30 minutes. 5. Carefully place your plastic Easter egg from Day 1 on the bottom of the container. Be sure the inside that you coated with glue and alum powder faces up. 6. Put the container in a warm place in your house for a full day. The water will begin to evaporate and alum crystals should grow on the inside of your plastic Easter egg. The longer you let the water evaporate, the larger the crystals will grow! 7. When the crystals are the size you like, carefully remove your geode from the container. Pour out any water that is still in the geode. Carefully place it on a paper towel and let it air dry. 8. You have created your very own geode. Try it again with many different colors and create your own home-made geode collection. Suggestion: Try this with other soluble salts that you can buy at the local pharmacy. Try to make a halite (salt) geode.

(-Via March 2015 Edition of the Flint Flashes, via The Tumbler, via 1/15 The Quarry, 9/14; from Mini Miners Monthly, 7/13 A WALK THROUGH POINT LOBOS (Reprinted from The Carmel Valley *Prospector*, Monterey, CA w/o written permission) Via: The Slate, June 2015)

---

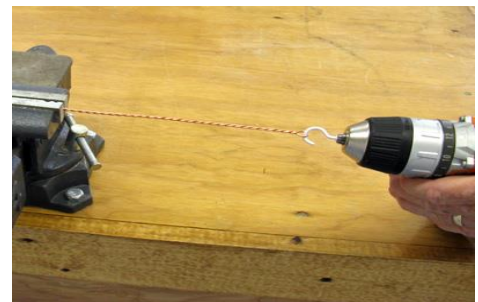
## Bench Tips By Brad

Get all 101 of Brad's tips in "Bench Tips for Jewelry Making" on Amazon, [www.BradSmithJewelry.com](http://www.BradSmithJewelry.com)

### TWISTING WIRE

Twisting wire can be done with an old hand drill but goes much faster with a power tool. My preference is to use a screw gun, although a Foredom should do well.

Just make a little hook out of coat hanger wire (or use a screw-in cup hook) and chuck it up in your screw gun. Grip the free ends of the wire in a vice and slip the looped end onto your hook. Keep a little tension on the wires as you twist. Note that a power drill is too fast a tool for this unless you have one with variable speed.



### SOLDERING PRONGS

I often use prongs to hold an irregular cab or other object on rings and pendants. But prongs can be a little tricky to solder. You have to find some way to hold them all upright while soldering, and the simple butt joint that looks strong sometimes breaks when you start to bend the prong over the stone. There's nothing worse than having a prong break off when you're setting the stone \*#~\*!

I solved both problems with one little trick. It holds the prongs in position while soldering and it gives you a stronger joint at the same time.

Locate and center punch the position for each prong. Then drill holes a little smaller than your prong wire. Sand a small taper on the ends of your prong wires and stand them up in the holes. The wires support themselves, soldering is easy, and the joint is stronger because of the increased soldering area.